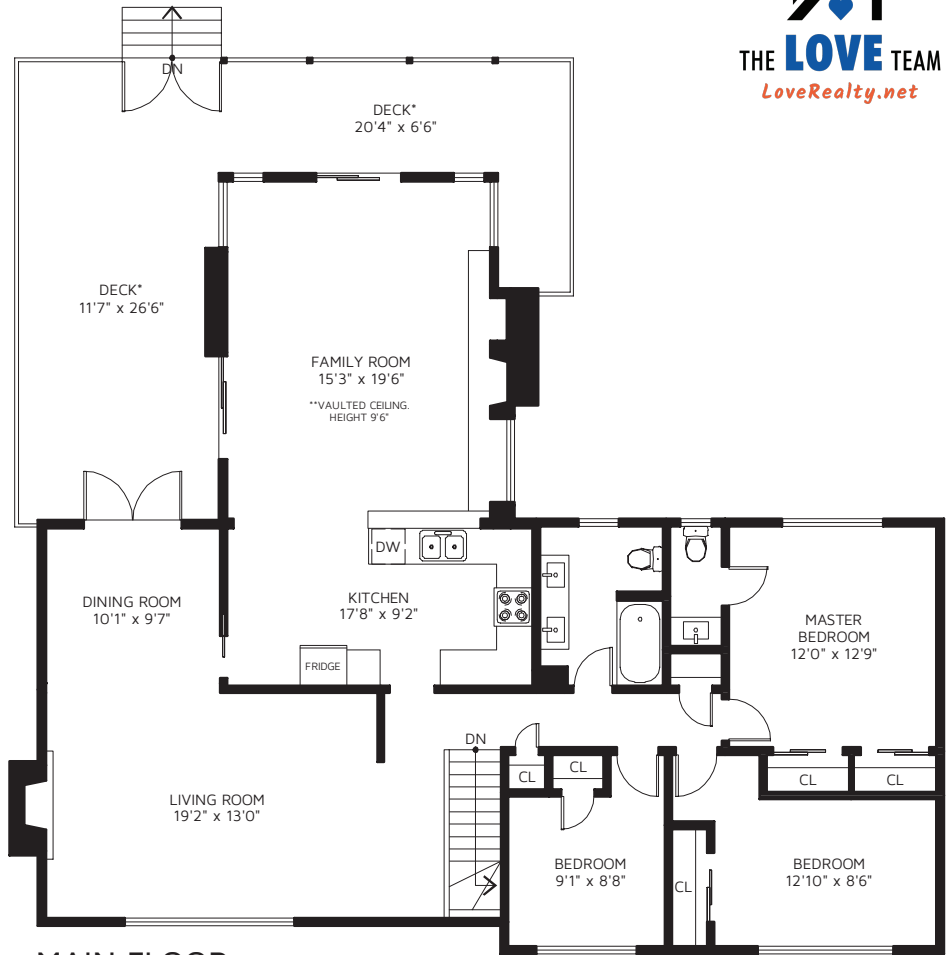
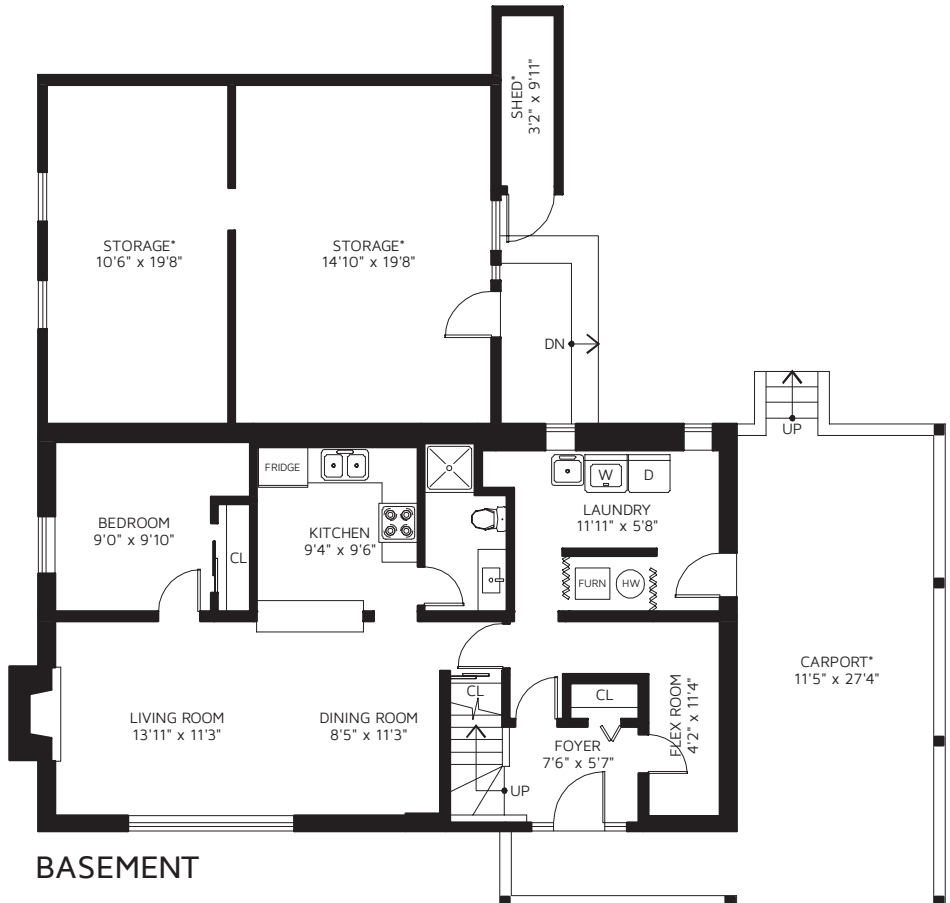




**979 GARROW DR,
PORT MOODY, V3H 1H8**



MAIN FLOOR



BASEMENT

MAIN FLOOR	1,625	SQ FT
BASEMENT	952	SQ FT
TOTAL FINISHED AREA	2,577	SQ FT

DECK*	478	SQ FT
CARPORT*	337	SQ FT
STORAGE*	540	SQ FT
SHED*	41	SQ FT

*NOT INCLUDED IN OVERALL SQUARE FOOTAGE