



# THE LOVE TEAM

Carsten, Gary & Derek Love

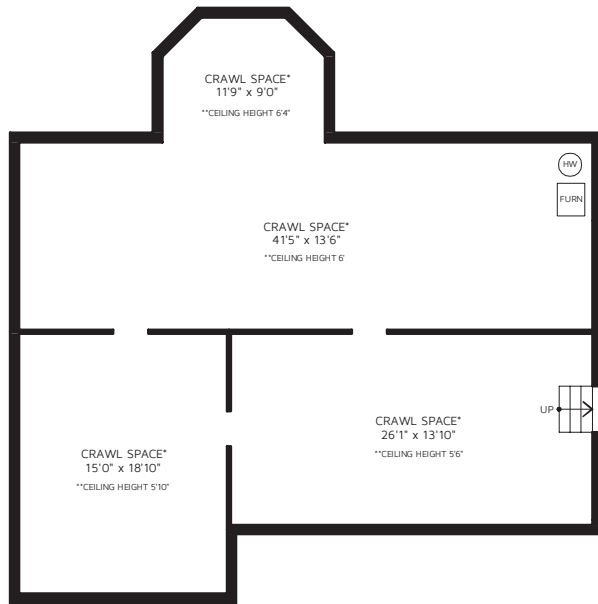
A dedicated family of Realtors® since 1971

**7960 WESTLAKE ST, BURNABY, V5A 4J9**

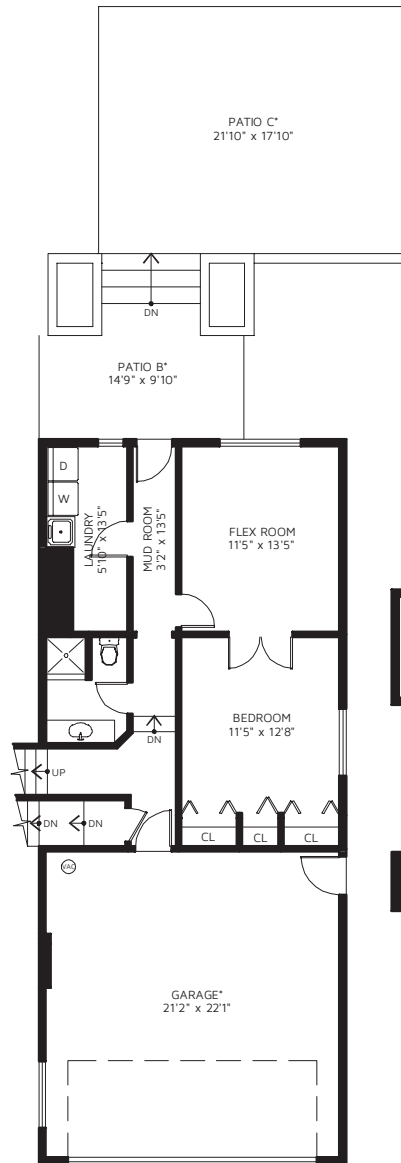
UPPER FLOOR	941	SQ FT
MAIN FLOOR	1,435	SQ FT
BELOW MAIN FLOOR	660	SQ FT
<b>TOTAL FINISHED AREA</b>	<b>3,036</b>	<b>SQ FT</b>

PORCH*	42	SQ FT
PATIO A*	168	SQ FT
DECK A*	169	SQ FT
DECK B*	321	SQ FT
GARAGE*	501	SQ FT
PATIO B*	127	SQ FT
PATIO C*	390	SQ FT
BASEMENT/CRAWL SPACE*	1,409	SQ FT

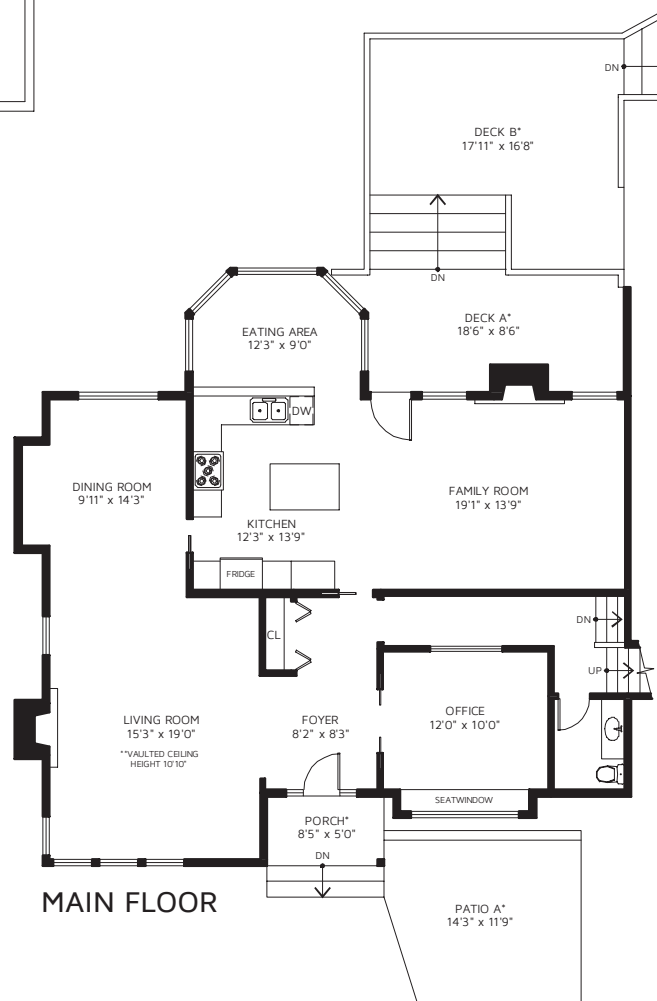
\*NOT INCLUDED IN OVERALL SQUARE FOOTAGE



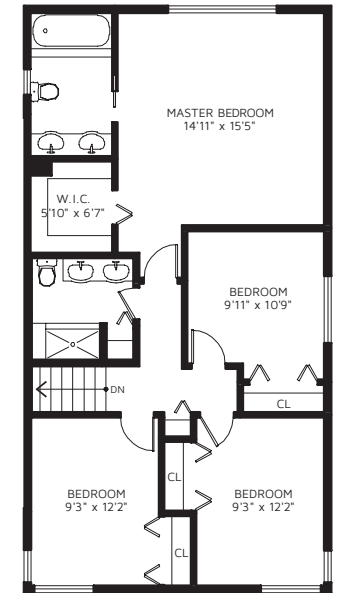
BASEMENT/CRAWL SPACE\*



BELOW MAIN FLOOR



MAIN FLOOR



UPPER FLOOR

