



THE LOVE TEAM

Carsten, Gary & Derek Love

A dedicated family of Realtors® since 1971

TEL:

604.437.1123

FAX:

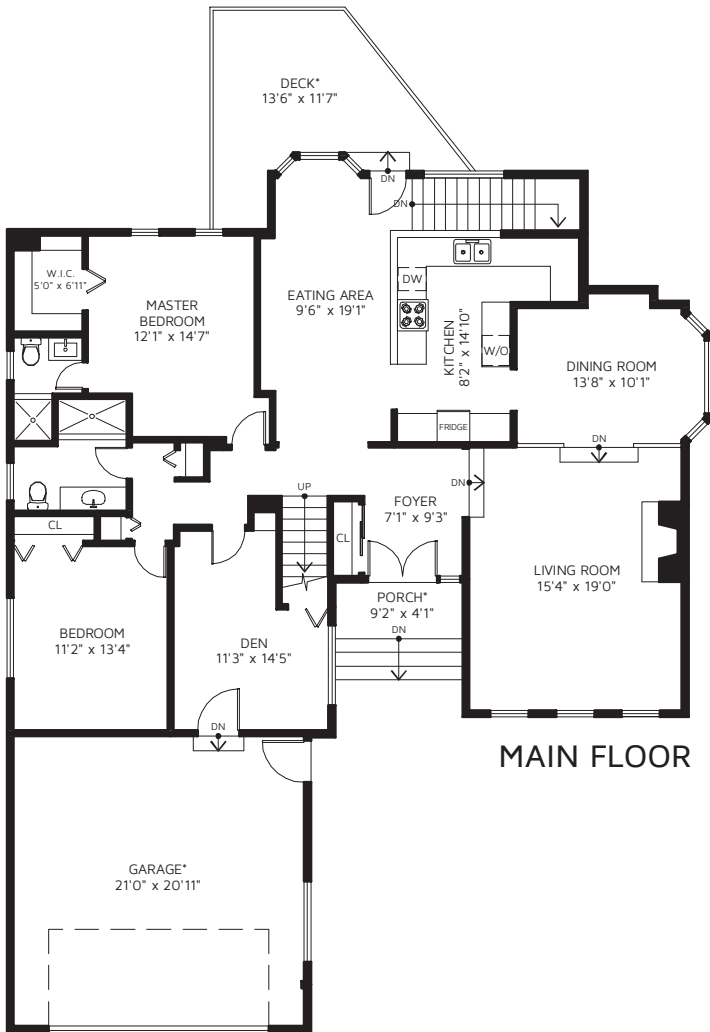
604.437.9077

E-MAIL:

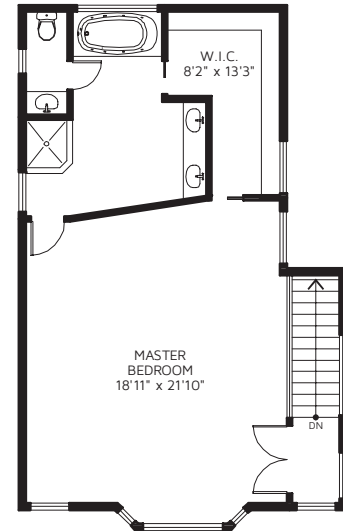
info@loverealty.net



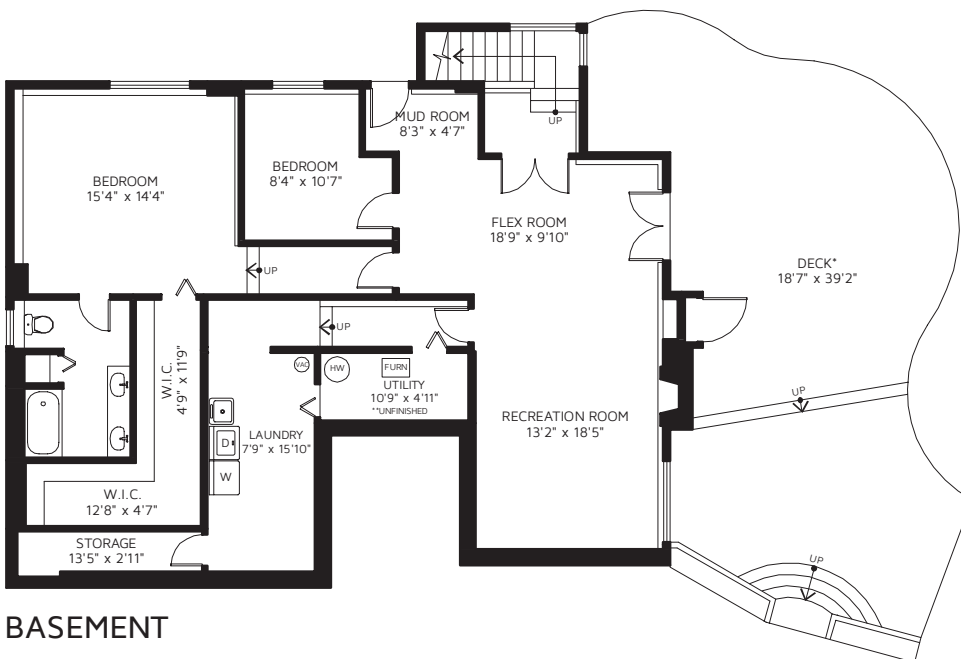
8217 WOODLAKE CRT, BURNABY, V5A 3P3



MAIN FLOOR



UPPER FLOOR



BASEMENT

UPPER FLOOR	795	SQ FT
MAIN FLOOR	1,767	SQ FT
BASEMENT	1,589	SQ FT
TOTAL FINISHED AREA	4,151	SQ FT
UNFINISHED**	63	SQ FT
TOTAL AREA	4,214	SQ FT

DECK*	810	SQ FT
GARAGE*	471	SQ FT
PORCH*	37	SQ FT
DECK*	183	SQ FT

*NOT INCLUDED IN OVERALL SQUARE FOOTAGE

REAL MEASUREMENTS & RENDERINGS

THIS FLOOR PLAN IS FOR PROMOTIONAL USE ONLY. NOT FOR CONSTRUCTION. ALL DIMENSIONS SHOULD BE CONSIDERED APPROXIMATE. AREA IS CALCULATED USING ANSI Z765 - 2003 METHOD. \$1,000,000 E&O INSURED

www.realmmeasurements.ca | 778 - 223 - 8842

