



CARSTEN LOVE

Personal Real Estate Corporation

CELL: 604-728-1470
BUS: 604-437-1123
FAX: 604-437-9077
E-MAIL: carsten@loverealty.net



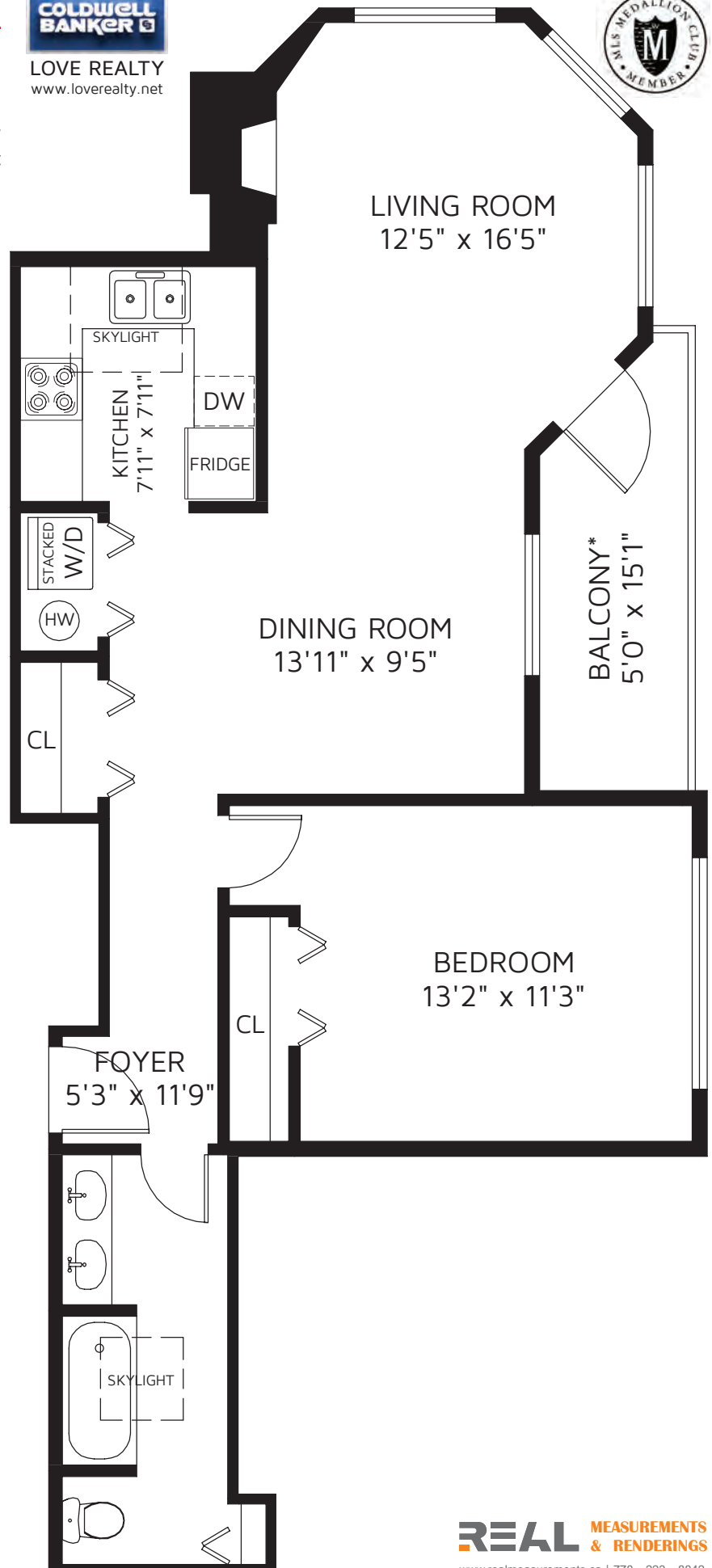
LOVE REALTY
www.loverealty.net



VICTORIA COURT

Unit PH1

2709 Victoria Dr,
Vancouver V5N 5T6



TOTAL AREA 793 SQ FT

BALCONY* 72 SQ FT

*NOT INCLUDED IN OVERALL SQUARE FOOTAGE

THIS FLOOR PLAN IS FOR PROMOTIONAL USE ONLY. NOT FOR CONSTRUCTION. ALL DIMENSIONS SHOULD BE CONSIDERED APPROXIMATE. AREA IS CALCULATED USING ANSI / BOMA STANDARD Z65.4 - 2010 METHOD 'A' FOR MULTI-UNIT RESIDENTIAL BUILDINGS. \$1,000,000 E&O INSURED

REAL MEASUREMENTS
& RENDERINGS

www.realmeasurements.ca | 778 - 223 - 8842